



TÜBİTAK

Horizon 2020

Spreading Excellence and Widening Participation



Selcen Gülsüm ASLAN ÖZŞAHİN

Horizon 2020 -Spreading Excellence and Widening Participation

National Contact Point and Expert for Turkey

Framework Programmes National Coordination Office , TÜBİTAK

Ankara , 2018

**Horizon 2020:
2014-2020**

Excellent Science

- Science in world standards
- Advanced research studies
- Access to best research infrastructures

**Total Budget:
80 Billion €**

Industrial Leadership

- Creating new jobs through innovation
- Innovative SMEs
- More private sector investment to the R&D

Societal Challenges

- Solutions to the grand societal challenges by multi-disciplinary researches



✓ **Science with and for Society**

✓ **Spreading Excellence and Widening Participation**

✓ **European Institute of Innovation and Technology**

✓ **Joint Research Center(non-nuclear)**

Despite serious efforts deployed at national and European level, the Union sees **significant internal disparities** in terms of research and innovation perform

There is significant evidence pointing to the fact that ***the pathway to economic growth and competitiveness is largely connected to research and innovation.***



To tap into Europe's yet unexploited potential in research and innovation a stronger participation in Horizon 2020 coupled with greater commitment by the **low-performing Member States and Associated Countries** can be instrumental.

This focus will enable the European Research Area to function in a ***more streamlined and homogeneous way***, where the individual strengths of every Member State and Associated Country may be optimised.

The Composite indicator of Research Excellence (with a corrective threshold of 70% of the EU average) has been selected to distinguish those countries identified as "low R&I performing" or "Widening" countries.



These are:

- **Member States:** Bulgaria, Croatia, Cyprus, Czech Republic, Estonia, Hungary, Latvia, Lithuania, Luxembourg, Malta, Poland, Portugal, Romania, Slovakia and Slovenia.
- **Associated Countries** (subject to valid association agreements of third countries with Horizon 2020): Albania, Armenia, Bosnia and Herzegovina, Faroe Islands, Former Yugoslav Republic of Macedonia, Georgia, Moldova, Montenegro, Serbia, Tunisia, **Turkey** and Ukraine.

WIDESPREAD-Implementation Tools

Teaming will invest in Europe's research and innovation potential through supporting the creation of new (or upgrading of existing) Centres of Excellence in low R&I performing Member States and Associated Countries on the basis of partnerships with internationally leading institutions.

ERA Chairs will bring outstanding researchers to universities and other research organisations, in those countries, that have high potential for research excellence to help them attract, maintain and increase high quality human resources and implement the structural changes necessary to achieve excellence on a sustainable basis

Twinning aims to build on the huge potential of networking for excellence through knowledge transfer and, exchange of best practice between research institutions and leading partners.



JPI Urban Europe enhances the knowledge and capacities in order to support urban transition towards sustainability in Europe and beyond.



Twinning- call is open ! (multibeneficiary- min 3 participants)

- Call Budget: 30 Mil. Euro
- Call Deadline: 15 November 2018
- Max Project Duration: up to 3 years
- Max Project Budget: 0.8 Million EUR



ERA Chairs — call will be open on 26 July 2018 ! (mono-beneficiary)

- Call Budget: 30 Mil. Euro
- Call closure: 15 November 2018
- Max Project Duration: up to 5 years
- Max Project Budget: 2.5 Million EUR



Teaming: Phase -2 call is open !

- Call Budget: 103 Mil. Euro
- Call closure: 15 November 2018
- Max Project Duration: up to 5 years
- Max Project Budget: 2.5 Million EUR

WIDESPREAD-03-2018: Twinning

Twining will:

Enhance the scientific and technological capacity of the linked institutions with a principal focus on the university or research organisation from the Widening Country;

Help **raise the research profile** of the institution from the Widening country as well as the research profile of its staff.

Twining aims ...

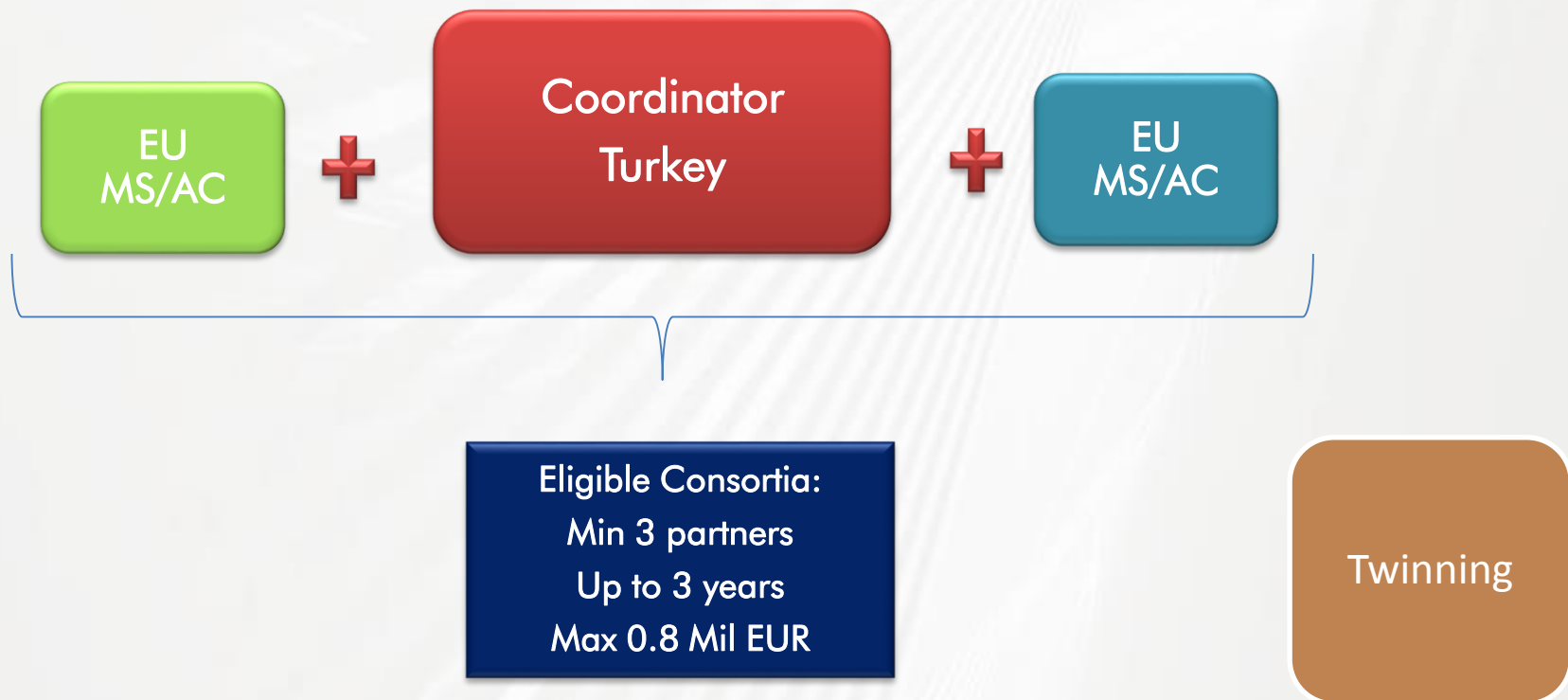
... at significantly strengthening a **defined field of research** in a university or research organization from a Widening country by linking it with at least two **internationally-leading** research institutions in other Member States or Associated Countries.

S&T
capacity

Research
Profile



The specific challenge is **to enhance networking activities** between the research institutions of the Widening countries and internationally-leading counterparts at EU level.



Coordinator should be from (the "low R&I performing" or "Widening" countries)

Successful Twinning proposals will have to

- **clearly outline the scientific strategy** for stepping up and stimulating scientific excellence and innovation capacity in a defined area of research as well as the scientific quality of the partners involved in the twinning exercise.
- This scientific strategy should include **arrangements for formulating new (or ongoing) joint research project(s)** in the scientific area of choice and describe **how Twinning will take this research to a new stage**, by enlarging its scope and/or the research partnership.
- Such a strategy **should include** a comprehensive set of activities to be supported.
- These should include at least a number of the following:
 - **short term staff exchanges;**
 - **expert visits**
 - **short term on-site or virtual training;**
 - **workshops; conference attendance;**
 - **organization of joint summer school type activities;**
 - **dissemination and outreach activities**

Twinning

Twinning proposals will have to

- A dedicated focus towards promoting **the involvement of early stage researchers**

(as per the MSCA definition)

in the coordinating institution from the Widening country is expected.

- This should take the form of **a dedicated work package** in the proposal describing activities dedicated to early stage researchers from the coordinating institution that could include:

- Training
- Mentoring
- Networking Measures



Expected Impact:

- **Increased research excellence** of the coordinating institution in the particular field of research as a result of the twinning exercise.
- Enhancing the **reputation, attractiveness and networking channels** of the coordinating institution.
- Improved **capability to compete** successfully for national, EU and internationally competitive research funding.
- Illustrate **quantitatively and qualitatively** the expected potential impact of the twinning exercise within the coordinating institution (and possibly at regional/national level) based on indicators like expected future publications in peer reviewed journals, collaboration agreements with businesses, intellectual property, new innovative products or services.
- It should be explained **how the leading scientific institutions in the partnership will contribute** in terms of provision of access to new research avenues, creativity and the development of new approaches, as well as acting as a source for increased mobility (inwards and outwards) of qualified scientists.
- **The benefits** for the internationally leading scientific institutions and the way they would materialize through the partnership should be substantiated.

Cost Categories

Eligible cost categories:

- administration,
- networking,
- coordination,
- training,
- management,
- travel costs

Ineligible costs:

- infrastructure costs;
- equipment;
- research costs (including consumables).

Twining- call is open

- Call Budget: 30 Mil. Euro
- Call Deadline: 15 November 2018
- Max Project Duration: up to 3 years
- Max Project Budget: 0.8 Million EUR
- Multibeneficiary- min 3 participants

Twining



Twinning- call is open ! (multibeneficiary- min 3 participants)

- Call Budget: 30 Mil. Euro
- Call Deadline: 15 November 2018
- Max Project Duration: up to 3 years
- Max Project Budget: 0.8 Million EUR



ERA Chairs — call will be open on 26 July 2018 ! (mono-beneficiary)

- Call Budget: 30 Mil. Euro
- Call closure: 15 November 2018
- Max Project Duration: up to 5 years
- Max Project Budget: 2.5 Million EUR



Teaming: Phase -2 call is open !

- Call Budget: 103 Mil. Euro
- Call closure: 15 November 2018
- Max Project Duration: up to 5 years
- Max Project Budget: 2.5 Million EUR

ERA Chairs actions will address the specific challenge of creating the appropriate conditions for high quality researchers and research managers to move and engage with institutions willing to achieve excellence in the scientific domain of choice and modify their research and innovation landscape.

Coordinator:
Turkey

Mono-beneficiary
Proposal must be submitted by a single
applicant
Up to 5years
Max 2.5 Mil EUR

The ERA Chairs actions will support **universities or research organizations** with the objective of **attracting and maintaining high quality human resources** under the direction of an outstanding researcher and research manager (the "ERA Chair holder") and in parallel implement structural changes to achieve excellence on a sustainable basis.

ERA
Chairs

An ERA Chair shall submit a proposal based on;

- a strengths, weaknesses, opportunities, and threats (**SWOT**) **analysis**, aimed at structural change in the institution and ensuring that the conditions are in place to foster excellent research.
- arrangements for compliance with ERA priorities including;
 - the **European Charter for Researchers & Code of Conduct for the Recruitment of Researchers**,
 - a description of the necessary investments in research projects,
 - facilities and infrastructures and how those will be achieved as, for example, through the use of Cohesion Policy funds,
 - and/ or a better use of the installed research capacity (in particular of EU cofunded research infrastructures & facilities).
- Outline how **the proposed activities will positively induce a change** in current practices.

ERA Chair holders should:

- **Be excellent researchers and research managers** in the given field of research, with a proven record of effective leadership.
- **Establish their own research team** fully integrated in the coordinator's institution to significantly improve its research performance in the scientific domain of choice and to be more successful in obtaining competitive funding.
- **Have a position within the organisation/university**, professor or similar, that will allow her/him to make appropriate resource allocation decisions, supervise team members and freely apply for research funding.

<<A letter of the head of the institution clearly describing the intended remuneration package of the ERA Chair holder and the criteria on which the level of remuneration has been established, as well as his/her roles, level of responsibility and obligations should be included within the proposal. >>

This will allow for the determination of the commitment of the institution and feasibility of the ERA Chair tasks.

ERA Chair

- The position of the ERA Chair holder must be **open to all EU and non-EU nationals** but shall match the profile of an "Established Researcher (R3)" or "Leading Researcher (R4)" as set out in the European Framework for Research Careers.
- Internal-mobility within the institution hosting the grant is excluded except in exceptional and duly justified cases.
- The appointment of an ERA Chair holder will be undertaken by the host institution at the beginning of the action and must follow an **open, transparent and merit-based recruitment** process that will be monitored by the European Commission.
- the Chair holder commits him/herself for **the full duration of the grant**.
- The ERA Chair holder is to be appointed in a **full-time position** (permanent or non-permanent) in accordance with the national legislation of the institution hosting the grant.
- The grant that can have a duration of five years maximum will cover the appointment of the ERA Chair holder and a number of team members (e.g. their salaries, recruitment costs , administrative costs, travel and subsistence costs).

Established Researcher (R3)

- Has an established reputation based on research excellence in their field;
- Makes a positive contribution to the development of knowledge, research and development through co-operations and collaborations;
- Identifies research problems and opportunities within their area of expertise;
- Identifies appropriate research methodologies and approaches;
- Conducts research independently which advances a research agenda;
- Can take the lead in executing collaborative research projects in cooperation with colleagues and project partners;
- Publishes papers as lead author, organises workshop or conference sessions

Leading Researcher (R4)

- Has an international reputation based on research excellence in their field;
- Demonstrates critical judgment in the identification and execution of research activities;
- Makes a substantial contribution (breakthroughs) to their research field or spanning multiple areas;
- Develops a strategic vision on the future of the research field
- Recognises the broader implications and applications of their research;
- Publishes and presents influential papers and books, serves on workshop and conference organising committees and delivers invited talks

Expected Impact:

- Institutional changes within the ERA Chair host institution allowing for its **full participation in the European Research Area**.
- **Increased attractiveness of the institution** for internationally excellent and mobile researchers (including a policy of compliance to the European Research Area priorities like (an open recruitment policy, gender balance, peer review and innovative doctoral training).
- **Increased research excellence** of the institution in the specific fields covered by the ERA Chair holders illustrated **quantitatively** and **qualitatively** through indicators such as expected future publications in peer reviewed journals, collaboration agreements with businesses, intellectual property, new innovative products or services.
- **Improved capability** to compete successfully for internationally competitive research funding.

Eligible Costs:

For the appointment of the ERA Chair holder and a number of team members :

- Salaries, recruitment costs,
- administrative costs,
- travel and subsistence costs

The contribution towards measures aimed at facilitating structural changes in the institution costs

- trainings,
- meetings,
- publications
- managing Intellectual Property Rights (IPR)

Ineligible Costs:

- Infrastructure costs
- Equipment
- Consumables

ERA Chairs

- Call will be open on 26 July 2018 !
- Call closure: 15 November 2018
- Mono-beneficiary
- Call Budget: 30 Mil. Euro
- Max Project Duration: up to 5 years
- Max Project Budget: 2.5 Million EUR

(These could be accepted if they constitute only a minor part of the total Horizon 2020 funding requested and are deemed necessary to fulfil the action's specific scope and objective).



Twinning- call is open ! (multibeneficiary- min 3 participants)

- Call Budget: 30 Mil. Euro
- Call Deadline: 15 November 2018
- Max Project Duration: up to 3 years
- Max Project Budget: 0.8 Million EUR



ERA Chairs — call will be open on 26 July 2018 ! (mono-beneficiary)

- Call Budget: 30 Mil. Euro
- Call closure: 15 November 2018
- Max Project Duration: up to 5 years
- Max Project Budget: 2.5 Million EUR



Teaming: Phase -2 call is open !

- Call Budget: 103 Mil. Euro
- Call closure: 15 November 2018
- Max Project Duration: up to 5 years
- Max Project Budget: 2.5 Million EUR

Indicative timetable for evaluation and grant agreement signature:

- Information on the outcome of the evaluation:
 - **Max 5 months** from the deadline (~April 2019)
- Indicative date for the signing of grant agreements:
 - **Max 8 months** from the deadline (~July 2019)



Call for Experts in WIDESPREAD !!!

- Researchers – bottom up approach ..
- Research managers , advisors, TTO officers, project managers..
- => Research Participant Portal => Expert Profile



Evaluation:

- Evaluation criteria, scoring and thresholds are described in Annex H of the Work Programme.
- Submission and evaluation processes are described in the Online Manual.
- The following aspects will be taken into account, to the extent that the proposed work corresponds to the topic description in the work programme:

Annex H: <https://ec.europa.eu/research/participants/portal/desktop/en/opportunities/h2020/topics/widespread-03-2018.html>

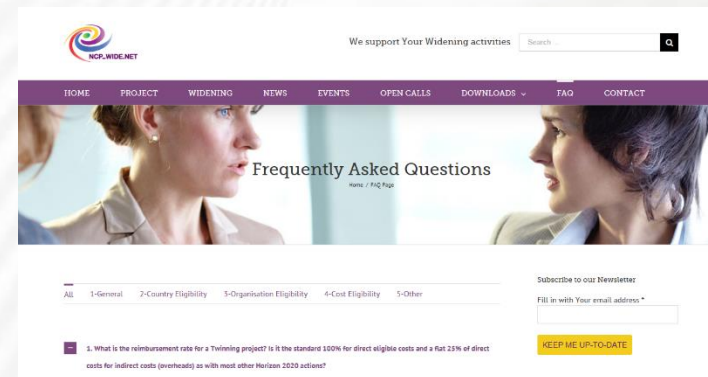
| Criterion 1 - Excellence | Criterion 2 - Impact | Criterion 3 - Quality and efficiency of the implementation |
|---|---|---|
| Threshold: 3/5.00 | Threshold: 3/5.00 | Threshold: 3/5.00 |
| <ul style="list-style-type: none">• Clarity and pertinence of the objectives• Soundness of the concept,• Credibility of the proposed methodology• Quality of the proposed coordination and/or support measures | <ul style="list-style-type: none">• The extent to which the outputs of the project would contribute to each of the expected impacts mentioned in the work programme under the relevant topic• Quality of the proposed measures to:<ul style="list-style-type: none">• exploit and disseminate the project results (including management of IPR), and to manage research data where relevant• communicate the project activities to different target audiences | <ul style="list-style-type: none">• Quality and effectiveness of the work plan, including extent to which the resources assigned to work packages are in line with their objectives and deliverables• Appropriateness of the management structures and procedures, including risk and innovation management• Complementarity of the participants and extent to which the consortium as a whole brings together the necessary expertise• Appropriateness of the allocation of tasks, ensuring that all participants have a valid role and adequate resources in the project to fulfil that role |

WIDESPREAD : Where to find info ?

- Research Participant Portal:

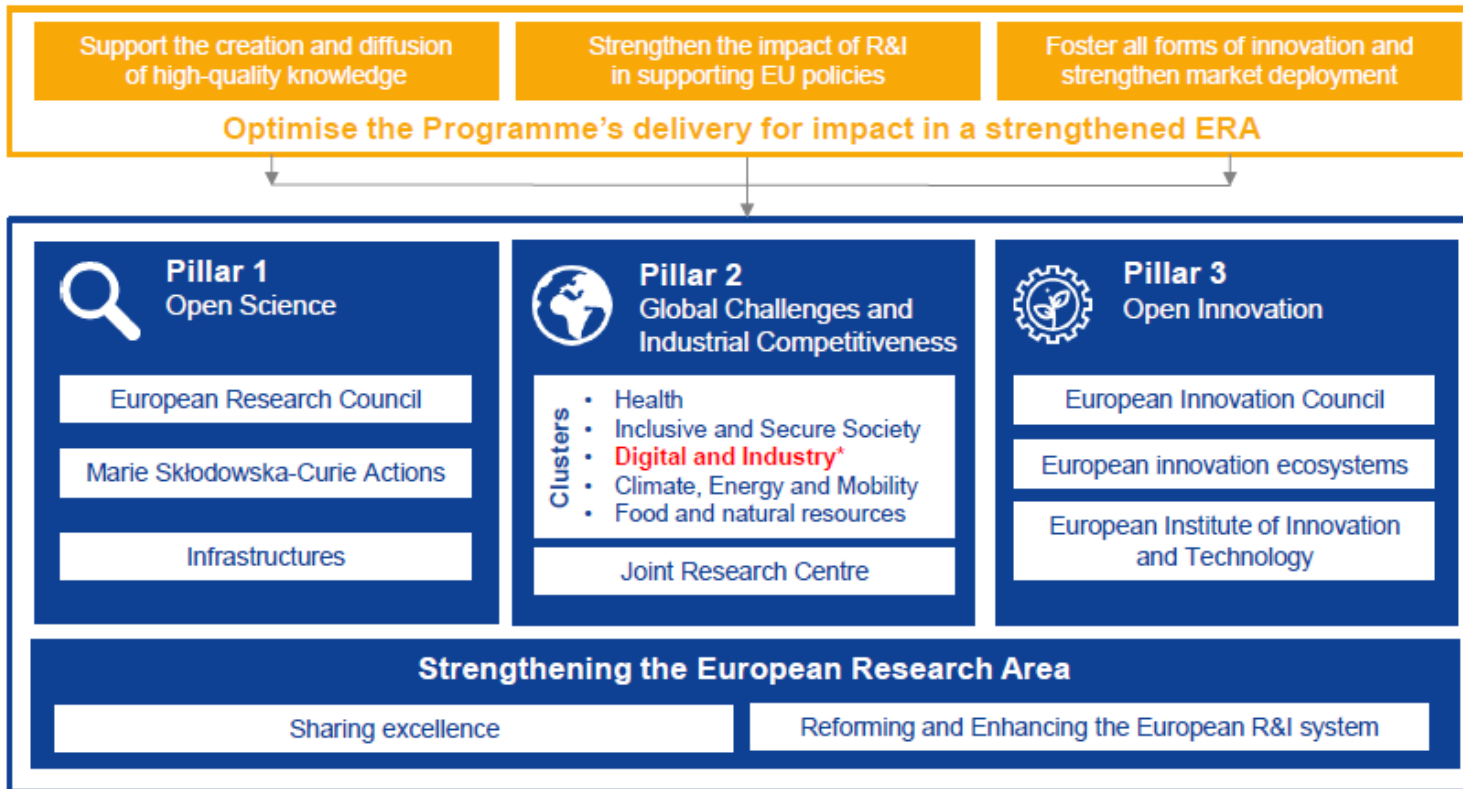
<https://ec.europa.eu/research/participants/portal/desktop/en/home.html>

- Horizon 2020 – National Website & NCPs : www.h2020.org.tr
- FAQ by NCP-WIDENET Project : <https://www.ncpwidenet.eu/faq-page-1/>
- Upcoming event : WIRE Conference 4-6 July 2018, Innsbruck Austria
- Keep in touch with us for coming WIDESPREAD Infodays in TR



Horizon Europe: evolution not revolution

Specific objectives of the Programme



* Cluster "Digital and Industry" includes Space

Good luck with your application !

Selcen Gülsüm ASLAN ÖZŞAHİN

**Horizon 2020 -*Spreading Excellence and Widening Participation*
National Contact Point and Expert for Turkey**

E-mail: ncpwidening@tubitak.gov.tr

Web: www.h2020.org.tr

Thank you for your participation !